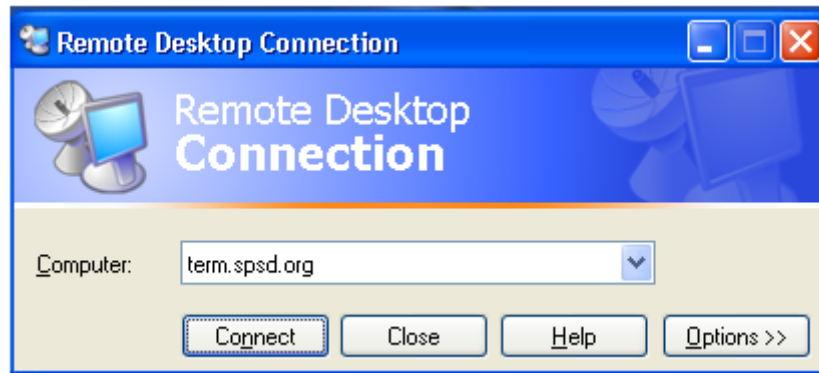


Remote Desktop Connection – Configuration & Connect to Address

When using RDC for the first time, there are some client configurations you must setup in order to provide you with the best experience possible when using this application.

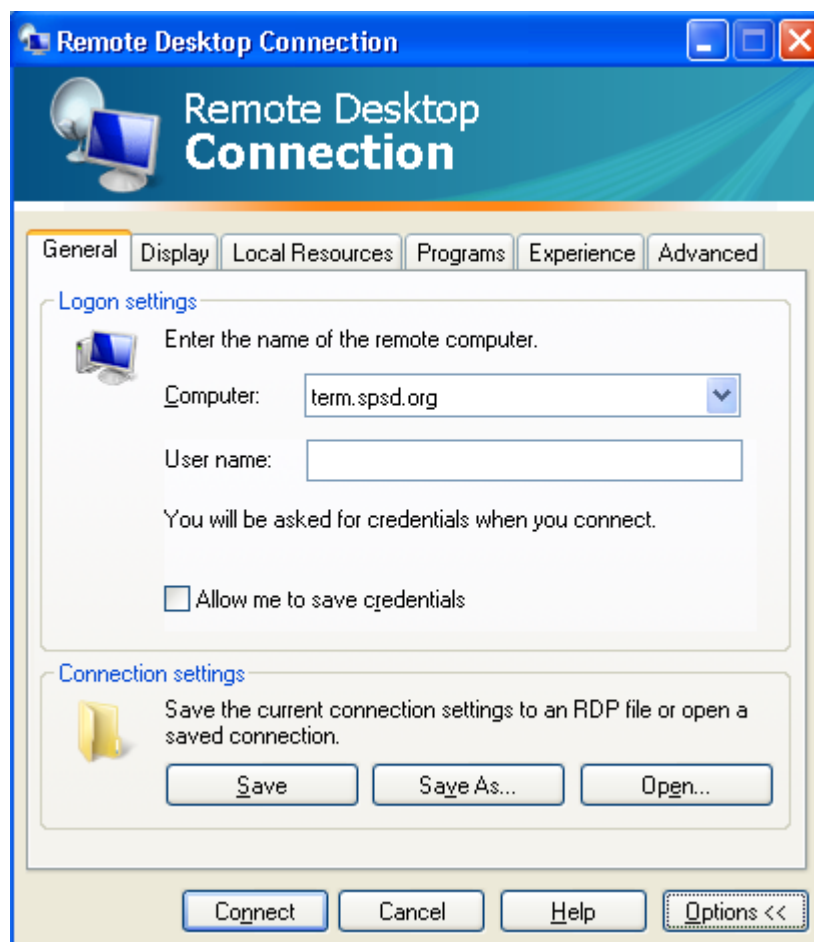
Upon opening Remote Desktop Connection, you will be presented with a connection window as shown below:



The “Computer:” **term.spsd.org** is the correct name you will need to enter to connect to the South Portland School Departments Remote Access Server, aka: The Terminal Server.

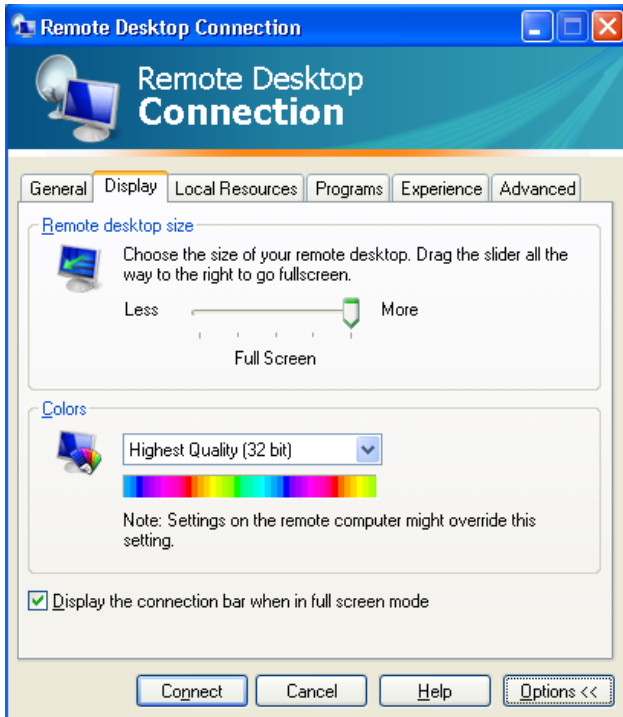
However, click on the “Options >>” button first and change the settings to what is shown below in the following pictures.

General Tab – You only need the computer name

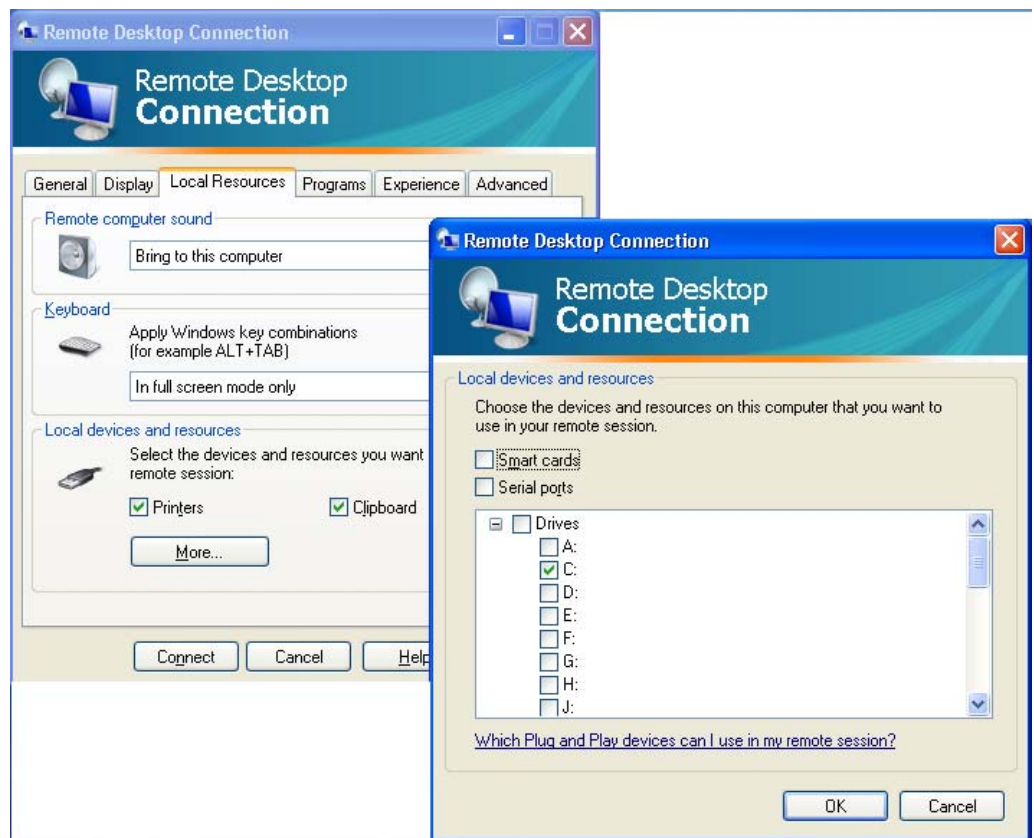


Remote Desktop Connection – Configuration & Connect to Address

“Display” Tab



“Local Resources” Tab

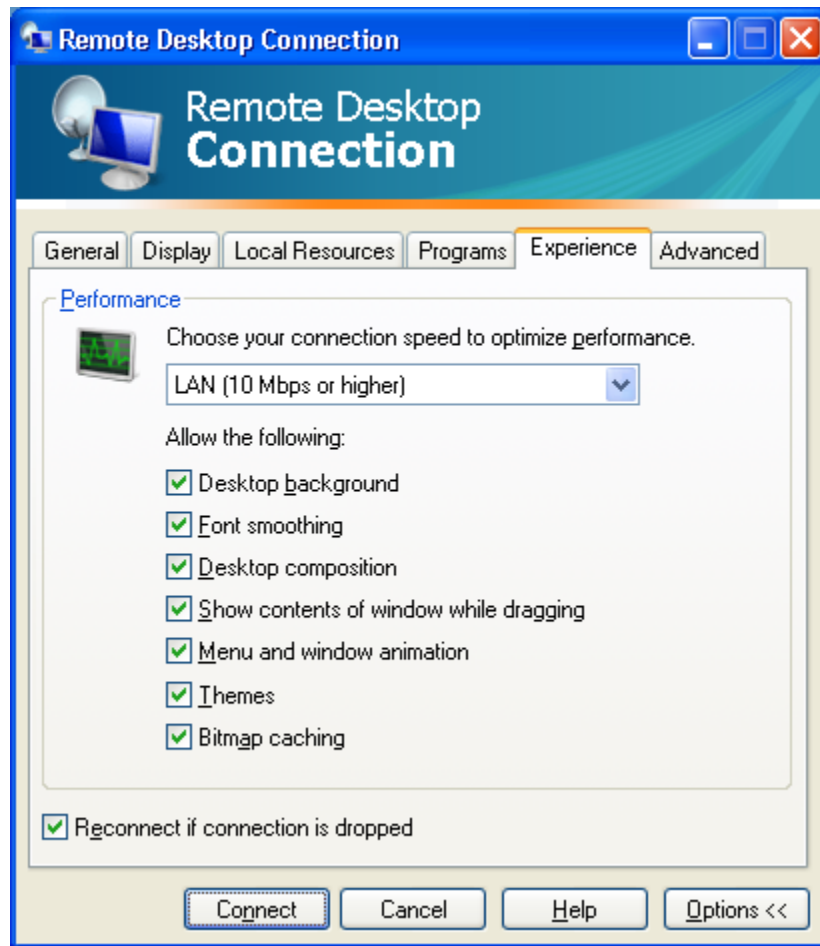


Click the “More” button to show and select your C: Drive

Remote Desktop Connection – Configuration & Connect to Address

Leave the “Programs” & “Advanced” tabs as their Defaults (Don’t change anything)

And the “Experience” Tab



After finishing the configurations, just click the “Connect” button to connect.

If you want to save this connection and settings, go back to the General Tab and select “Save As”, name the file SPSD.rdp and save it to your desktop for easy access.

Logging in the first time:

After connecting to the Terminal server you will be presented with a Novell Login Window; just enter your network ID and password. You will then be presented with a windows login with your user ID already entered.

Use the password: abc123 You will then be prompted to change your password.

Please change it to the same password you use for Novell, and that will be the last time you will be asked to login twice.

If you have any problems, please contact someone from the IS Dept.